



2025 WAARCI POTA

Event Details



Welcome to the 2025 POTA season! WAARCI will kick off our first POTA event for 2025 at **Perry Memorial Conservation Area**. We hope you can join us for a day of radio "in the wild." Bring your go box/bag, emcomm rig, whatever you wanna call it. Heck, even if you don't have a rig for POTA, bring yourself and enjoy bouncing radio waves around the earth.

73 de W0AU

Where: Ralph and Martha Perry Memorial Conservation Area

Located South of Concordia, MO. Just East of MO-23 on NE 925 Road. Parking area is just east of the entrance to the Concordia Shooting Range at N38°53'20.7" W93°32'01.2"

When: 10.MAY.2025, 1030 hr. until whenever. (normally 2-4 hrs)

Directions: From MO-23, turn east onto NE 900th Rd. Continue 0.9mi to destination. Note, NE 900th Rd turns into NE 925.

Words of wisdom to improve your experience....

Missouri Conservation areas have different regulations and amenities than some may be accustomed to. Most do not have toilets, shower houses, visitor centers etc. Plan accordingly for an enjoyable experience. Please observe all state and local regulations and laws when participating in this event. It is your responsibility to remain in compliance. Use the link below for further information about the area.

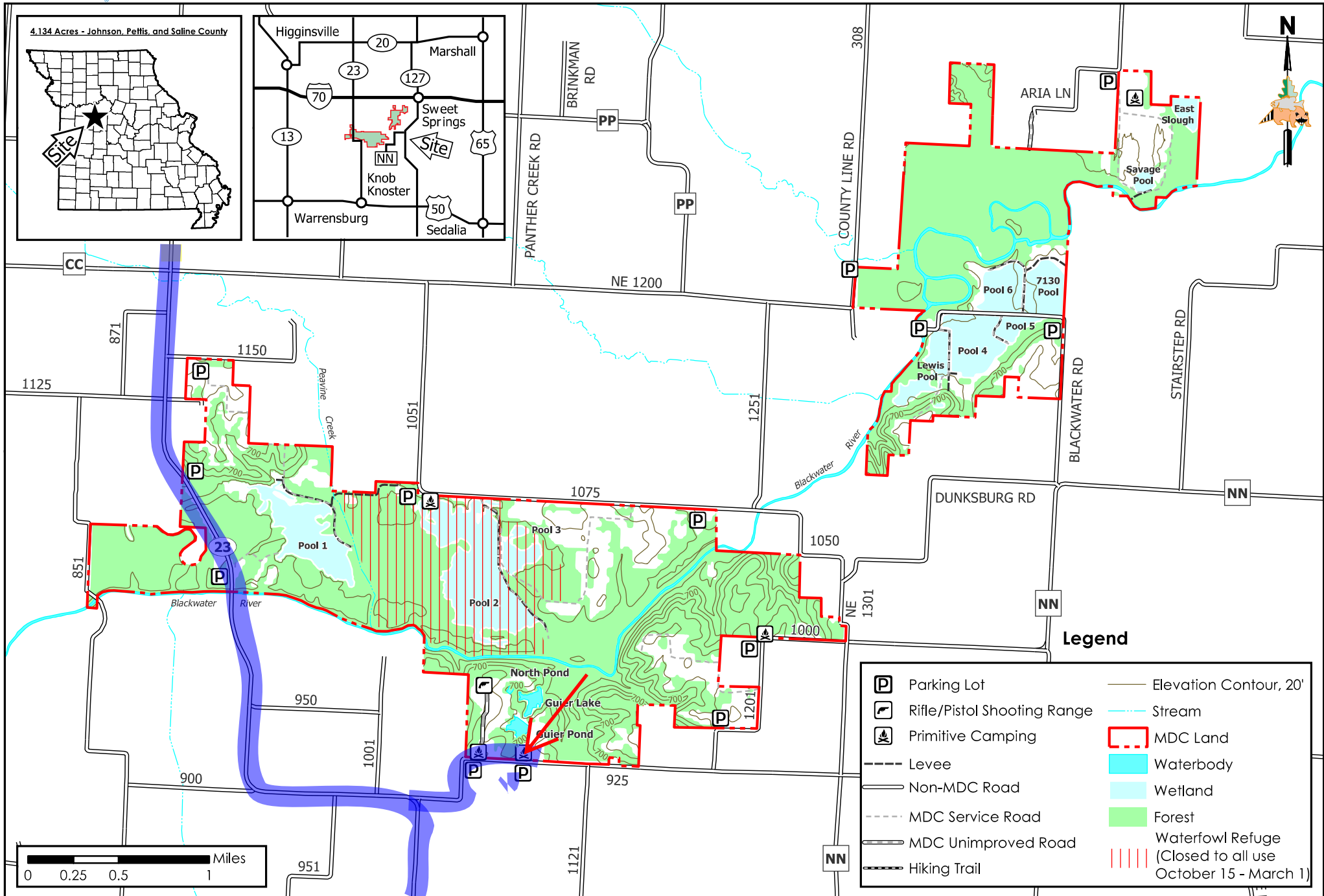
<https://mdc.mo.gov/discover-nature/places/ralph-martha-perry-memorial-conservation-area>



Perry (Ralph and Martha) Mem CA

Conservation Commission of the State of Missouri ©

Last Updated - 10/8/2019



MAP DISCLAIMER: Although all data in this map have been compiled by the Missouri Department of Conservation, no warranty, expressed or implied, is made by the department as to the accuracy of the data and related materials. The act of distribution shall not constitute any such warranty, and no responsibility is assumed by the department in the use of these data or related materials.